



# Wheel Horse®

## PARTS MANUAL



# RAIDER 8-10-12-14

## PIONEERS IN TRACTORING

### MODEL AND SERIAL NUMBERS

Serial and model numbers are necessary to correctly identify your tractor and engine whenever you need repair parts. The tractor model and serial numbers are on a plate attached to the hood stand just below the control panel.

The engine model and serial numbers are on a plate attached to the engine shroud.

For your convenience and ready reference, enter the model and serial numbers in the spaces below.

Tractor Model No.

Tractor Serial No.

Engine Model & Spec. No.

Engine Serial No.

### TO ORDER PARTS FROM THIS MANUAL

1. Find the illustration of the desired part and note its identifying number.

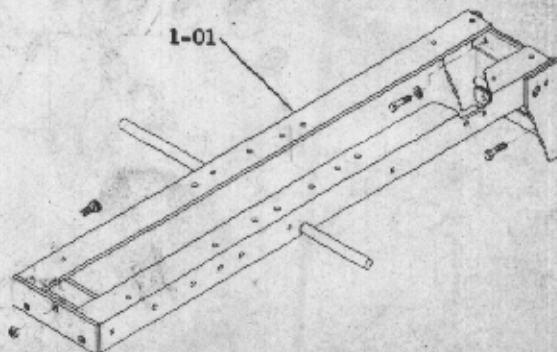
2. Locate the item number in the parts listing and determine the part number and description.
3. Make sure the part to be ordered is for your model tractor as designated in the Model Application Column.
4. Order the part from your local authorized Wheel Horse Dealer.

**WHEEL-HORSE PRODUCTS, INC.**

515 W. Ireland Road, South Bend, Indiana 46614

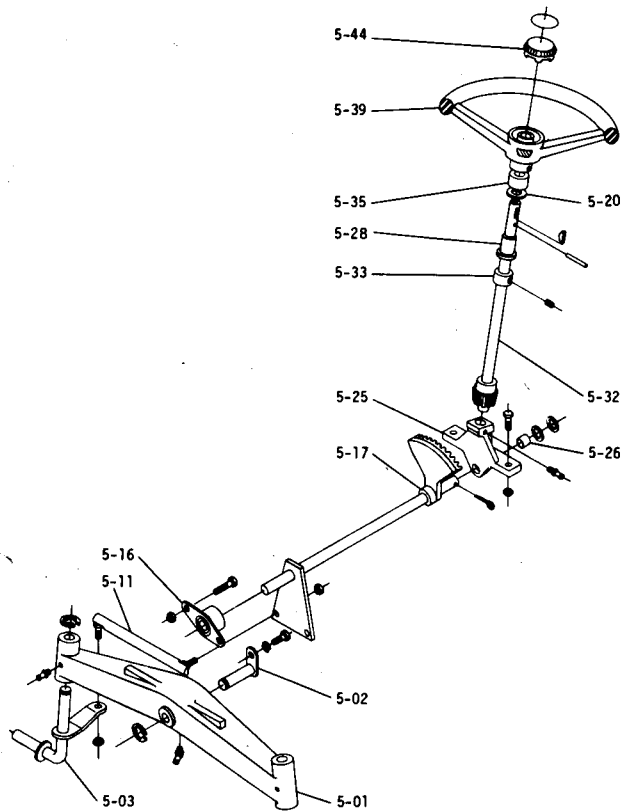
Plate 1.1

FRAME

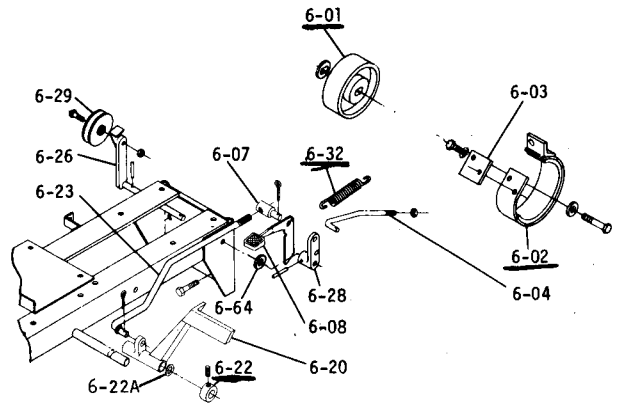




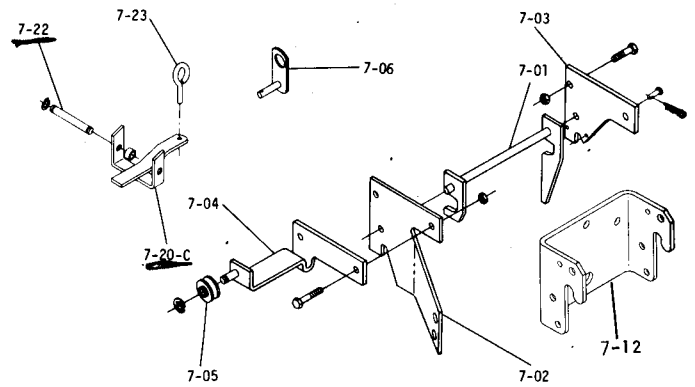
**Plate 5.1 FRONT AXLE AND STEERING**



**Plate 6.2 BRAKE/CLUTCH LINKAGE**

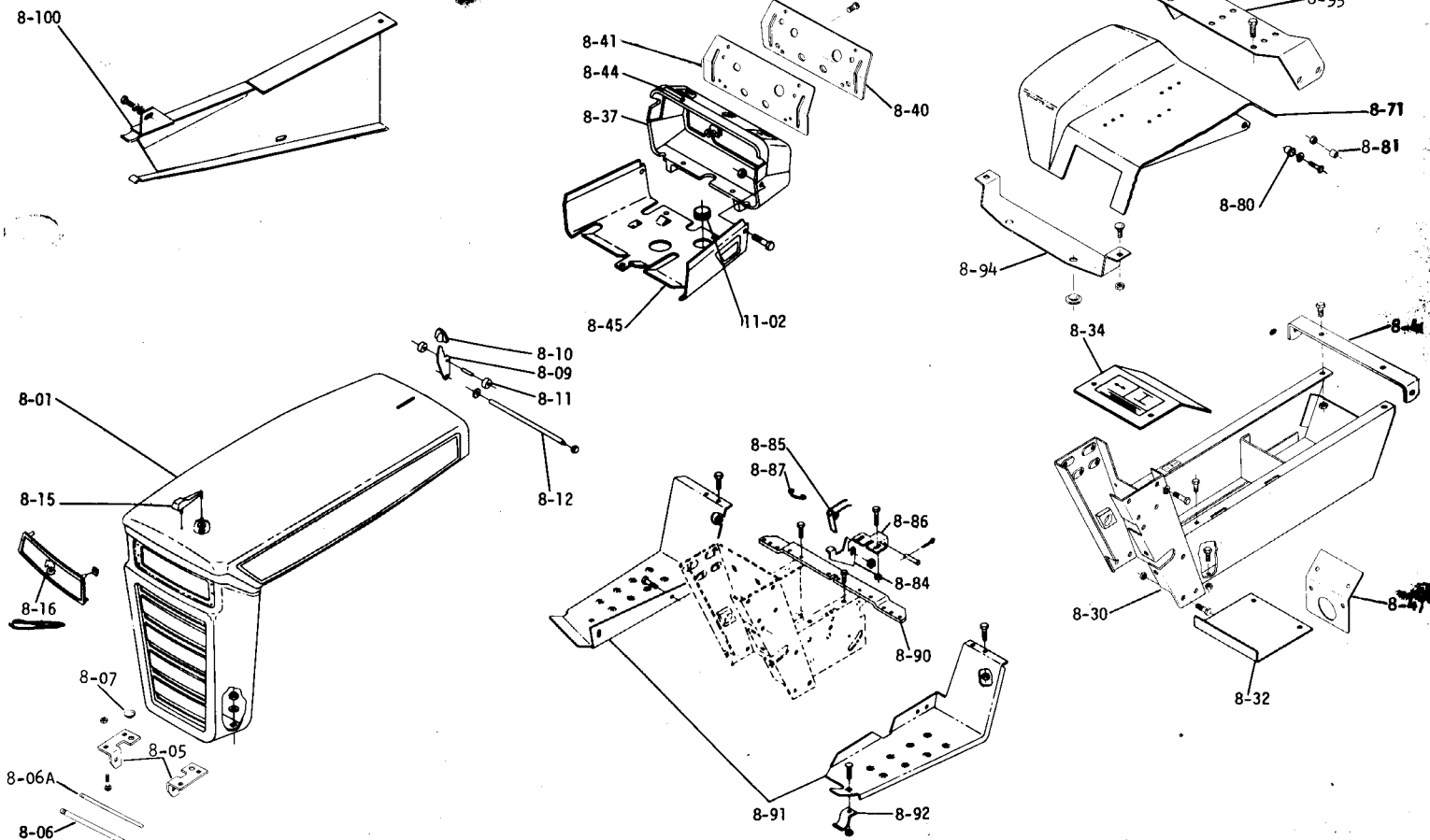


**Plate 7.1 HITCHES**



**Plate 8.1**

**SHEET METAL AND COVERS**



ITEM NO.	PART NO.	DESCRIPTION	MODEL APPLICATION	NO. REQ'D.
<b>1.000 FRAME ASSEMBLY (PLATE 1.1)</b>				
1-01	101794	Frame Assy.	Ra. 8, 10, 12, 14	1
	908032-4	Bolt, $\frac{3}{8}$ -16 x $\frac{3}{4}$ Trans. Upper	Ra. 8, 10, 12, 14	2
	920083-4	Lockwasher, $\frac{3}{8}$ Upper Bolts	Ra. 8, 10, 12, 14	2
	908033-6	Bolt, Eslok $\frac{3}{8}$ -16 x $\frac{7}{8}$ Trans. Lw.	Ra. 8, 10, 12, 14	2
	900063-9	Bolt, Carriage $\frac{3}{8}$ -16 x 1 Ft. Hitch	Ra. 8, 10, 12, 14	3
	915113-6	Nut, Eslok $\frac{3}{8}$ -16	Ra. 8, 10, 12, 14	3
<b>3.010 TRANSMISSION 6-SPEED (PLATE 3.1)</b>				
3-10	8163	Case — R.H.	Ra. 12, 14	1
	101761	Case — R.H.	Ra. 8, 10	1
	6941	Case — L.H.	Ra. 12, 14	1
	3901	Case — L.H.	Ra. 8, 10	1
	908043-4	Bolt, $\frac{3}{8}$ -16 x $3\frac{1}{2}$ Lower Rear	Ra. 8, 10, 12, 14	1
	908038-4	Bolt, $\frac{3}{8}$ 16 x 2	Ra. 8, 10, 12, 14	5
	915113-6	Nut, $\frac{3}{8}$ -16 Eslok	Ra. 8, 10, 12, 14	6
	943460	Plug, $\frac{1}{4}$ " Pipe Oil Drain	Ra. 8, 10, 12, 14	1
	943420	Plug, $\frac{3}{8}$ " Pipe	Ra. 8, 10, 12, 14	1
3-11	1533	Bearing — Ball $1\frac{1}{2}$ " I.D.	Ra. 8, 10, 12, 14	2
3-12	1532	Bearing — Needle 1" I.D.	Ra. 8, 10, 12, 14	2
3-13	1542	Bearing — Needle $\frac{5}{8}$ " I.D.	Ra. 8, 10, 12, 14	1
3-14	1526	Bearing — Needle $1\frac{1}{8}$ " I.D.	Ra. 12, 14	2
3-14	1528	Bearing — Needle 1" I.D.	Ra. 8, 10	2
3-15	1529	Bearing — Needle $\frac{3}{4}$ " I.D.	Ra. 8, 10, 12, 14	1
3-16	100442	Seal — $\frac{5}{8}$ Shaft	Ra. 8, 10, 12, 14	1
3-17	100443	Seal — $1\frac{1}{8}$ Axle	Ra. 12, 14	2
3-17	100863	Seal 1" Axle	Ra. 8, 10	2
3-18	3915	Pin, Dowel	Ra. 8, 10, 12, 14	2
3-19	1523	Bearing — Needle $\frac{3}{4}$ " I.D.	Ra. 8, 10, 12, 14	1
3-20	1531	Bearing — Needle $\frac{5}{8}$ " I.D.	Ra. 8, 10, 12, 14	1
3-21	100441	Seal — Brake Shaft	Ra. 8, 10, 12, 14	1
3-22	8050	End Cap R.H.	Ra. 12, 14	1
3-22	8051	End Cap L.H.	Ra. 12, 14	1
3-22	101053	Case, Differential	Ra. 8, 10	2
	908138-4	Bolt, $\frac{3}{8}$ -16 x $3\frac{1}{4}$	Ra. 12, 14	5
	908146	Bolt, $\frac{3}{16}$ -18 x $3\frac{1}{4}$	Ra. 8, 10	4
	915663-4	Nut, $\frac{3}{8}$ -16 E.S.	Ra. 12, 14	5
	915662-4	Nut, $\frac{3}{16}$ -18 E.S.	Ra. 8, 10	4
3-23	7196	Gear, Differential Ring	Ra. 12, 14	1
3-23	3906	Gear, Differential Ring	Ra. 8, 10	1
3-24	8056	Gear, Differential Pinion	Ra. 12, 14	10
3-24	101623	Gear, Differential Pinion	Ra. 8, 10	4
3-25	7200	Body	Ra. 12, 14	2
	933209	Roll Pin $\frac{1}{4}$ x $\frac{1}{2}$	Ra. 12, 14	4
3-26	7235	Spring, Cylindrical	Ra. 12, 14	1
3-27	8053	Gear, Axle	Ra. 12, 14	2
3-27	3908	Gear, Axle	Ra. 8, 10	2
3-28	7199	Washer, Thrust	Ra. 12, 14	2
3-29	7202	Axle, R.H.	Ra. 12, 14	1
3-29	7203	Axle, L.H.	Ra. 12, 14	1
3-29	101880	Axle	Ra. 8, 10	2
3-30	7169	Snap Ring	Ra. 12, 14	2
3-30	7939	Snap Ring	Ra. 8, 10	2
3-31	7201	Shaft, Input	Ra. 8, 10, 12, 14	1
3-32	7418	Washer, Thrust	Ra. 8, 10, 12, 14	1
3-33	7204	Gear and Spline	Ra. 8, 10, 12, 14	1
3-34	1518	Bearing, Needle $\frac{5}{8}$ " I.D.	Ra. 8, 10, 12, 14	4
3-35	5175	Pinion — Gear and Spline	Ra. 8, 10, 12, 14	1
3-36	7205	Gear, Sliding	Ra. 8, 10, 12, 14	1
3-37	7206	Gear, Reduction	Ra. 8, 10, 12, 14	1
3-38	7207	Bearing — Needle $\frac{3}{8}$ " I.D. x $\frac{1}{2}$	Ra. 8, 10, 12, 14	2
3-39	7208	Shaft — Reduction	Ra. 8, 10, 12, 14	1
3-40	7209	Shift Fork	Ra. 8, 10, 12, 14	1
3-41	3517	Ball-Stop	Ra. 8, 10, 12, 14	3
3-42	3518	Spring — Stop	Ra. 8, 10, 12, 14	2
3-43	1243	Plug	Ra. 8, 10, 12, 14	1
3-44	7213	Bolt — Detent	Ra. 8, 10, 12, 14	1
3-45	7214	Lever — Shift	Ra. 8, 10, 12, 14	1
3-46	5173	Gear — Hi and 2nd	Ra. 8, 10, 12, 14	1
3-47	5174	Gear — Low and Reverse	Ra. 8, 10, 12, 14	1
3-48	5615	Rail — Front Shift	Ra. 8, 10, 12, 14	1
3-49	5616	Rail — Rear Shift	Ra. 8, 10, 12, 14	1
3-50	3503	Shift Fork	Ra. 8, 10, 12, 14	2
	933156	Roll Pin $\frac{1}{8}$ x 1"	Ra. 8, 10, 12, 14	2

ITEM NO.	PART NO.	DESCRIPTION	MODEL APPLICATION	NO. REQ'D.
3-51	5614	Pin, Shift Stop	Ra. 8, 10, 12, 14	1
3-52	7269	Gear and Bearing, Complete, Cluster	Ra. 8, 10, 12, 14	1
3-53	3525	Gear — Cluster	Ra. 8, 10, 12, 14	1
3-54	1504	Bearing — Bronze $\frac{3}{4}$ " I.D.	Ra. 8, 10, 12, 14	2
3-55	3527	Gear — Reduction	Ra. 8, 10, 12, 14	1
3-56	9840	Shaft — Cluster Gear and Brake	Ra. 8, 10, 12, 14	1
	937014	Key — #9 Woodruff	Ra. 8, 10, 12, 14	1
3-57	4204	Gear — Reverse Idler	Ra. 8, 10, 12, 14	1
3-58	1516	Bushing — Bronze $\frac{1}{2}$ " I.D.	Ra. 8, 10, 12, 14	1
3-59	3909	Shaft	Ra. 8, 10, 12, 14	1
3-60	9839	Gear 44T-11T	Ra. 8, 10, 12, 14	1
3-61	102274	Nipple — $\frac{1}{2}$ " x $1\frac{1}{2}$ " Pipe	Ra. 8, 10, 12, 14	1
3-63	101847	Dipstick — Assy.	Ra. 8, 10, 12, 14	1
3-65	3912	Gasket — Case	Ra. 8, 10, 12, 14	1
3-66	5632	Shift Stick	Ra. 8, 10, 12, 14	1
3-67	1239	Set Screw — Dog Point $\frac{1}{4}$ -20 x $\frac{3}{4}$	Ra. 8, 10, 12, 14	1
	915111-4	Nut $\frac{1}{4}$ -20	Ra. 8, 10, 12, 14	1
3-68	3577	Boot	Ra. 8, 10, 12, 14	1
3-69	1001	Knob	Ra. 8, 10, 12, 14	2
3-70	7217	Handle — Shift Hi and Low Range	Ra. 8, 10, 12, 14	1
	933184	Roll Pin $\frac{3}{16}$ x $\frac{3}{4}$	Ra. 8, 10, 12, 14	1
<b>5.000 FRONT AXLE AND STEERING (PLATE 5.1)</b>				
5-01	5638	Axle Assy. — Front	Ra. 8, 10, 12, 14	1
	1030	Fitting — Grease	Ra. 8, 10, 12, 14	2
	1481	Fitting — Grease	Ra. 8, 10, 12, 14	1
5-02	6216	Pin and Plate Assy.	Ra. 8, 10, 12, 14	1
	908015-4	Bolt, $\frac{5}{16}$ -18 x $\frac{1}{2}$	Ra. 8, 10, 12, 14	1
	920082-4	Lockwasher, $\frac{5}{16}$	Ra. 8, 10, 12, 14	1
5-03	5630	Spindle Assy. R.H.	Ra. 8, 10, 12, 14	1
	5631	Spindle Assy. L.H.	Ra. 8, 10, 12, 14	1
	5618	E-Ring	Ra. 8, 10, 12, 14	3
5-11	102592	Ball Joint Assy. R.H.	Ra. 8, 10, 12, 14	1
	102593	Ball Joint Assy. L.H.	Ra. 8, 10, 12, 14	1
	915002-6	Nut, Eslok $\frac{3}{8}$ -24	Ra. 8, 10, 12, 14	4
5-16	6472	Bearing and Housing	Ra. 8, 10, 12, 14	1
	908034-4	Bolt, $\frac{3}{8}$ -16 x 1	Ra. 8, 10, 12, 14	2
	915113-6	Nut, Eslok $\frac{3}{8}$ -16	Ra. 8, 10, 12, 14	2
5-17	6469	Shaft Assy., Lower Steering	Ra. 8, 10, 12, 14	1
	5210	Washer, Shim (.015)	Ra. 8, 10, 12, 14	1
	1278	Washer, Shim (.050)	Ra. 8, 10, 12, 14	1
	932035-4	Cotter Pin, $\frac{3}{16}$ x $\frac{1}{4}$	Ra. 8, 10, 12, 14	1
5-20	7896	Washer, Spring	Ra. 8, 10, 12, 14	1
5-25	6396	Support Assy., Lower Steering	Ra. 8, 10, 12, 14	1
	908035-4	Bolt, $\frac{3}{8}$ -16 x $1\frac{1}{4}$	Ra. 8, 10, 12, 14	2
	915113-6	Nut, $\frac{3}{8}$ -16 Eslok	Ra. 8, 10, 12, 14	2
	1030	Fitting — Grease	Ra. 8, 10, 12, 14	1
5-26	6397	Bushing, Lower Shaft	Ra. 8, 10, 12, 14	1
5-28	101442	Bushing, Steering Column	Ra. 8, 10, 12, 14	1
5-32	7447	Shaft Assy., Upper Steering	Ra. 8, 10, 12, 14	1
5-33	1085	Collar, Set	Ra. 8, 10, 12, 14	1
	909848-5	Set Screw, $\frac{1}{4}$ -20 x $\frac{1}{4}$ Nylok	Ra. 8, 10, 12, 14	1
5-35	7468	Collar, Steering	Ra. 8, 10, 12, 14	1
5-39	7420	Wheel, Steering	Ra. 8, 10, 12, 14	1
	933269	Pin Spiral $\frac{1}{4}$ x $1\frac{1}{4}$	Ra. 8, 10, 12, 14	1
	937014	Key, Woodruff #9	Ra. 8, 10, 12, 14	1
5-44	7469	Insert, Steering Wheel	Ra. 8, 10, 12, 14	1
	7421	Decal, Steering Wheel Insert	Ra. 8, 10, 12, 14	1
<b>6.000 BRAKE/CLUTCH LINKAGE (PLATE 6.2)</b>				
6-01	9600	Drum — Brake	Ra. 8, 10, 12, 14	1
	908032-5	Bolt, $\frac{3}{8}$ -16 x $\frac{3}{4}$ Nylok	Ra. 8, 10, 12, 14	1
	5951	Washer, Double "D"	Ra. 8, 10, 12, 14	1
	2844	Washer, Special	Ra. 8, 10, 12, 14	1

ITEM NO.	PART NO.	DESCRIPTION	MODEL APPLICATION	NO. REQ'D.
7376-6-02	9593	Brake Band Assy.	Ra. 8, 10, 12, 14	1
	908002-4	Bolt, 1/4-20 x 3/8 Brake Anchor	Ra. 8, 10, 12, 14	2
	920081-4	Lockwasher, 1/4	Ra. 8, 10, 12, 14	2
6-03	9598	Plate — Park Brake Stop	Ra. 8, 10, 12, 14	1
6-04	9599	Rod — Brake	Ra. 8, 10, 12, 14	1
	915663-4	Nut, 3/8-16 E.S.	Ra. 8, 10, 12, 14	1
	932017-4	Cotter Pin, 1/8 x 1	Ra. 8, 10, 12, 14	1
6-07	1861	Stud — Clutch Rod	Ra. 8, 10, 12, 14	1
	932017-4	Cotter Pin, 1/8 x 1	Ra. 8, 10, 12, 14	2
6-08	5544	Handle — Parking Brake	Ra. 8, 10, 12, 14	1
6-20	2267	Pedal	Ra. 8, 10, 12, 14	1
* 6-22	1085	Collar	Ra. 8, 10, 12, 14	1
	909848-5	Set Screw, 1/4-20 x 1/4 Nylok	Ra. 8, 10, 12, 14	1
6-22A	7896	Washer, Spring	Ra. 8, 10, 12, 14	1
6-23	2593	Rod and Guide Assy.	Ra. 8, 10, 12, 14	1
	932017-4	Cotter Pin, 1/8 x 1	Ra. 8, 10, 12, 14	1
6-26	9757	Idler Arm Assy.	Ra. 8, 10, 12, 14	1
	933158	Roll Pin, 1/8 x 1 1/4	Ra. 8, 10, 12, 14	1
6-28	4899	Arm — Clutch Rod Pivot	Ra. 8, 10, 12, 14	1
	933158	Roll Pin, 1/8 x 1 1/4	Ra. 8, 10, 12, 14	1
6-29	7451	Pulley — Idler	Ra. 8, 10, 12, 14	1
	911404-4	Bolt, 3/8-16 x 1 3/8 Special	Ra. 8, 10, 12, 14	1
	915113-6	Nut, 3/8-16 Eslok	Ra. 8, 10, 12, 14	1
6-32	1014	Spring	Ra. 8, 10, 12, 14	1
6-64	3765	Washer, 1/2" Dia. Special	Ra. 8, 10, 12, 14	1
<b>7.000 HITCH ASSEMBLIES (PLATE 7.1)</b>				
7-01	6710	Latch and Shaft Assy.	Ra. 8, 10, 12, 14	1
	932120-4	Pin, Clevis	Ra. 8, 10, 12, 14	1
	933503-4	Hairpin Cotter	Ra. 8, 10, 12, 14	1
7-02	6712	Plate — R.H. Mounting	Ra. 8, 10, 12, 14	1
	908035-4	Bolt, 3/8-16 x 1 1/4	Ra. 8, 10, 12, 14	2
	915113-6	Nut, 3/8-16 Eslok	Ra. 8, 10, 12, 14	2
7-03	4497	Plate — L.H. Mounting	Ra. 8, 10, 12, 14	1
	908034-4	Bolt, 3/8-16 x 1	Ra. 8, 10, 12, 14	2
	915113-6	Nut 3/8-16 Eslok	Ra. 8, 10, 12, 14	2
7-04	8174	Bracket and Pin Assy.	Ra. 8, 10, 12, 14	1
7-05	6714	Bushing	Ra. 8, 10, 12, 14	1
	MW-4564	E-Ring, 3/8 Nominal	Ra. 8, 10, 12, 14	1
7-06	6727	Cam Arm Assy.	Ra. 8, 10, 12, 14	1
7-12	101711	Hitch — Front	Ra. 8, 10, 12, 14	1
* 7-20-C	1644	Hitch	Ra. 8, 10, 12, 14	1
* 7-22	1647	Pin — Hitch Mounting	Ra. 8, 10, 12, 14	1
	979120-4	Spacer	Ra. 8, 10, 12, 14	2
	936125	Snap Ring, 3/4 Shaft	Ra. 8, 10, 12, 14	2
* 7-23	1813	Tool Pin	Ra. 8, 10, 12, 14	1
<b>7.030 LIFT LINKAGE (PLATE 7.2)</b>				
7-30	5448	Lift Lever Assy.	Ra. 8, 10, 12, 14	1
	933506-4	Hairpin Cotter, Mounting Block	Ra. 8, 10, 12, 14	1
	908015-4	Bolt, 3/8-18 x 1/2 Mounting	Ra. 8, 10, 12, 14	3
	920082-4	Lockwasher, 5/16	Ra. 8, 10, 12, 14	3
7-31	3680	Cap — Rod End	Ra. 8, 10, 12, 14	2
7-32	6542	Grip — Handle	Ra. 8, 10, 12, 14	1
7-33	3624	Spring	Ra. 8, 10, 12, 14	1
7-35	3578	Guide — Plunger Rod	Ra. 8, 10, 12, 14	1
7-36	5449	Plunger Rod	Ra. 8, 10, 12, 14	1
7-37	4438	Plunger	Ra. 8, 10, 12, 14	1
	933168	Roll Pin, 5/32 x 1 3/16	Ra. 8, 10, 12, 14	1
7-40	5640	Quadrant	Ra. 8, 10, 12, 14	1
7-41	2179	Rod — Height Control	Ra. 8, 10, 12, 14	1
7-42	5280	Knob — Height Control	Ra. 8, 10, 12, 14	1
	926715-4	Bolt, 3/8-16 x 3/4 S.T.	Ra. 8, 10, 12, 14	2
7-43	8277	Conduit Assy.	Ra. 8, 10, 12, 14	1

ITEM NO.	PART NO.	DESCRIPTION	MODEL APPLICATION	NO. REQ'D.
<b>8.000 SHEET METAL AND COVERS (PLATE 8.1)</b>				
8-01	9699	Hood Assy.	Ra. 8, 10, 12, 14	1
8-05	101732	Bracket — Grille Pivot — R.H.	Ra. 8, 10, 12, 14	1
	101733	Bracket — Grille Pivot — L.H.	Ra. 8, 10, 12, 14	1
	900037-4	Bolt, 3/16-18 x 3/4 Carriage	Ra. 8, 10, 12, 14	4
	915112-6	Nut, 3/16-18 Eslok	Ra. 8, 10, 12, 14	4
8-06	101710	Rod — Pivot	Ra. 8, 10, 12, 14	1
	100398	Ring, Retainer	Ra. 8, 10, 12, 14	2
8-06A	101850	Rod — Hood Stop	Ra. 8, 10, 12, 14	1
	932000-4	Cotter Pin, 1/16 x 1/2	Ra. 8, 10, 12, 14	2
8-07	5667	Bumper — Rubber	Ra. 8, 10, 12, 14	2
8-09	5467	Lever — Hood Latch	Ra. 8, 10, 12, 14	1
	933182	Roll Pin, 3/16 x 3/8	Ra. 8, 10, 12, 14	1
8-10	5469	Knob — Hood Latch	Ra. 8, 10, 12, 14	1
8-11	5468	Roller — Steel	Ra. 8, 10, 12, 14	2
8-12	5522	Rod — Hood Latch	Ra. 8, 10, 12, 14	1
	5466	Speed Nut, 1/4 Push On 1/2 Dia.	Ra. 8, 10, 12, 14	2
8-15	5438	Ornament — Hood	Ra. 8, 10, 12, 14	1
	5437	Speed Nut 1/8 Dia. Push On	Ra. 8, 10, 12, 14	2
	100646	Washer, Rubber	Ra. 8, 10, 12, 14	2
8-16	9799	Plate — Escutcheon	Ra. 8, 10	1
	7721	Clip	Ra. 8, 10	4
	100646	Washer, Rubber	Ra. 8, 10	4
8-30	101898	Hoodstand Assy.	Ra. 8, 10, 12, 14	1
	908034-4	Bolt, 3/8-16 x 1 To Frame	Ra. 8, 10, 12, 14	4
	915113-6	Nut, 3/8-16 Eslok	Ra. 8, 10, 12, 14	4
	908032-4	Bolt, Tool Box 3/8-16 x 3/4	Ra. 8, 10, 12, 14	2
	920009-4	Washer 3/8 SAE	Ra. 8, 10, 12, 14	2
	920083-4	Lockwasher 3/8	Ra. 8, 10, 12, 14	2
8-32	6825	Cover — Dust	Ra. 8, 10, 12, 14	1
	908017-4	Bolt, 3/16-18 x 3/4	Ra. 8, 10, 12, 14	2
	915112-6	Nut, 3/16-18 Eslok	Ra. 8, 10, 12, 14	2
8-34	7220	Plate, Cover	Ra. 8, 10, 12, 14	1
	960151-4	Bolt, 1/4-20 x 1/2 Whizlock	Ra. 8, 10, 12, 14	2
8-37	5450	Housing — Control Panel	Ra. 8, 10, 12, 14	1
	960152-4	Bolt, 1/4-20 x 3/8 Whizlock	Ra. 8, 10, 12, 14	4
	915111-6	Nut, 1/4-20 Eslok	Ra. 8, 10, 12, 14	4
8-40	101882	Panel — Dash	Ra. 8, 10, 12, 14	1
8-41	101841	Plate — Backup	Ra. 8, 10, 12, 14	1
	5442	Speednut #10-16	Ra. 8, 10, 12, 14	4
		Tinnerman	Ra. 8, 10, 12, 14	4
	102168	Screw S.T. 10-16 x 3/4"	Ra. 8, 10, 12, 14	4
8-44	5606	Tape — Hood Insulation	Ra. 8, 10, 12, 14	AR
8-45	100498	Support — Fuel Tank	Ra. 8, 10, 12, 14	1
	926694-4	Screw 3/16-18 x 3/8 S.T.	Ra. 8, 10, 12, 14	4
	3023	Clip	Ra. 10, 12, 14	AR
8-46	102304	Bracket — Seat Pivot	Ra. 8, 10, 12, 14	1
	908032-4	Bolt, 3/8-16 x 3/4	Ra. 8, 10, 12, 14	2
	915113-6	Nut, 3/8-16 Eslok	Ra. 8, 10, 12, 14	2
8-47	101344	Bracket Instrument	Ra. 8, 10, 12, 14	1
	MW-4475	Clip Tinnerman 1/4-20	Ra. 8, 10, 12, 14	2
	960151-4	Bolt, Whizlock 1/4-20 x 1/2	Ra. 8, 10, 12, 14	2
8-71	102370	Fender	Ra. 8, 10, 12, 14	1
8-80	7879	Bushing — Bronze	Ra. 8, 10, 12, 14	2
8-81	4937	Spacer	Ra. 8, 10, 12, 14	2
	908035-4	Bolt, 3/8-16 x 1 1/4	Ra. 8, 10, 12, 14	2
	915663-4	Nut, 3/8-16 E.S.	Ra. 8, 10, 12, 14	2
	920009-4	Washer 3/8 — SAE	Ra. 8, 10, 12, 14	2
8-84	7464	Latch — Fender	Ra. 8, 10, 12, 14	1
8-85	MW-8863	Spring — Latch	Ra. 8, 10, 12, 14	1
	5977	Bushing	Ra. 8, 10, 12, 14	1
	7617	Pin 3/16 Rod End	Ra. 8, 10, 12, 14	1
	932008-4	Cotter Pin 5/32 x 3/4	Ra. 8, 10, 12, 14	1
8-86	7616	Bracket — Fender Latch	Ra. 8, 10, 12, 14	1
	908005-4	Screw, 1/4-20 x 1	Ra. 8, 10, 12, 14	2
	915111-6	Nut, 1/4-20 Eslok	Ra. 8, 10, 12, 14	2

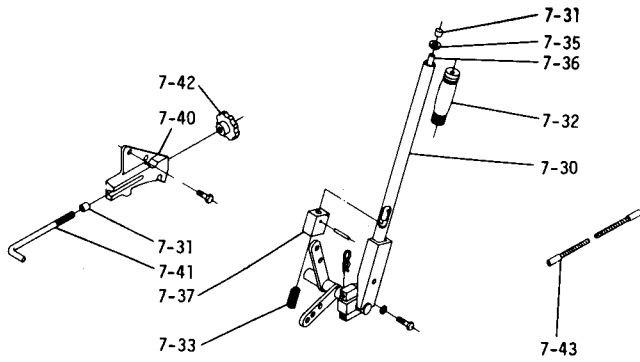
ITEM NO.	PART NO.	DESCRIPTION	MODEL APPLICATION	NO. REQ'D.
8-87	7882	Stop — Fender Latch	Ra. 8, 10, 12, 14	1
8-90	7463	Bracket — Foot Rest	Ra. 8, 10, 12, 14	1
	926694-4	Screw $\frac{3}{16}$ -18 x $\frac{3}{8}$ S.T.	Ra. 8, 10, 12, 14	2
8-91	7454	Footrest — R.H.	Ra. 8, 10, 12, 14	1
	7455	Footrest — L.H.	Ra. 8, 10, 12, 14	1
	908017-4	Bolt, $\frac{3}{16}$ -18 x $\frac{3}{4}$ To Bracket	Ra. 8, 10, 12, 14	4
	915662-4	Nut, $\frac{3}{16}$ -18 E.S.	Ra. 8, 10, 12, 14	4
	960175-4	Bolt, $\frac{3}{16}$ -18 x $\frac{1}{2}$ To Belt Guard	Ra. 8, 10, 12, 14	3
8-92	7456	Bracket — Footrest Anchor	Ra. 8, 10, 12, 14	2
	900214-4	Bolt, $\frac{3}{16}$ -18 x $\frac{3}{4}$ Carriage	Ra. 8, 10, 12, 14	2
	915662-4	Nut, $\frac{3}{16}$ -18 E.S.	Ra. 8, 10, 12, 14	2
8-94	102248	Bracket — Fender (Front)	Ra. 8, 10, 12, 14	1
	900285-9	Bolt, $\frac{3}{16}$ -18 x $\frac{3}{8}$ Carriage	Ra. 8, 10, 12, 14	2
	915112-6	Nut, $\frac{3}{16}$ -18 Eslok	Ra. 8, 10, 12, 14	2
	5667	Bumper, Rubber	Ra. 8, 10, 12, 14	2
8-95	102249	Bracket — Fender Hinge	Ra. 8, 10, 12, 14	1
8-100	101958	Belt Guard Assy.	Ra. 8, 10, 12, 14	1
	908045-4	Bolt, $\frac{3}{16}$ -14 x $\frac{3}{4}$ Eng. Mount	Ra. 10, 12, 14	1
	908032-4	Bolt, $\frac{3}{8}$ -16 x $\frac{3}{4}$	Ra. 8	1
	920084-4	Lockwasher $\frac{3}{16}$	Ra. 10, 12, 14	1
	920040-4	Washer $\frac{3}{16}$	Ra. 10, 12, 14	1
	920083-4	Lockwasher $\frac{3}{8}$	Ra. 8	1
	920039-4	Washer $\frac{3}{8}$	Ra. 8	1
<b>9.000 ENGINE (PLATE 9.1)</b>				
9-02	101867	Engine 8 H.P. Kohler	Ra. 8	1
	908035-4	Bolt, $\frac{3}{8}$ -16 x $\frac{1}{4}$ Eng. Mount	Ra. 8	4
	915663-4	Nut, $\frac{3}{8}$ -16 E.S.	Ra. 8	4
9-02	101954	Engine 10 H.P. Kohler	Ra. 10	1
	101955	Engine 12 H.P. Kohler	Ra. 12	1
	101956	Engine 14 H.P. Kohler	Ra. 14	1
	908034-4	Bolt, $\frac{3}{8}$ -16 x 1 Eng. Mount	Ra. 10, 12, 14	2
	908036-4	Bolt, $\frac{3}{8}$ -16 x $\frac{1}{2}$	Ra. 10, 12, 14	2
	915663-4	Nut, $\frac{3}{8}$ -16 E.S.	Ra. 10, 12, 14	2
	920083-4	Lockwasher $\frac{3}{8}$	Ra. 10, 12, 14	2
9-03	102317	Base — Engine Mounting	Ra. 8	1
	908034-4	Bolt, $\frac{3}{8}$ -16 x 1 To Frame	Ra. 8	4
	915663-4	Nut, $\frac{3}{8}$ -16 E.S.	Ra. 8	4
9-06	101495	Nipple, Special — Drain	Ra. 8, 10, 12, 14	1
	5222	Elbow $\frac{3}{8}$ x 90°	Ra. 8, 10, 12, 14	1
	943419-4	Plug — Pipe $\frac{1}{4}$ -18 Sq. Hd.	Ra. 8, 10, 12, 14	1
<b>10.000 FUEL AND EXHAUST SYSTEMS (PLATE 10.1)</b>				
10-02	101837	Choke Control Assy.	Ra. 8, 10, 12, 14	1
10-03	101834	Throttle Control Assy.	Ra. 10, 12, 14	1
	101835	Throttle Control Assy.	Ra. 8	1
	8713	Screw, Pan Hd. 10-24 x $\frac{3}{8}$	Ra. 8, 10, 12, 14	4
	915964-4	Nut — Keps 10-24	Ra. 8, 10, 12, 14	4
10-04	102186	Knob, Choke	Ra. 8, 10, 12, 14	1
10-04A	102185	Knob, Throttle	Ra. 8, 10, 12, 14	1
10-13	100452	Strap, Engine (PTO Side)	Ra. 8, 10, 12, 14	1
	920007-4	Washer — $\frac{1}{4}$ SAE	Ra. 8	1
	910790-4	Screw — 10-24 x $\frac{3}{8}$	Ra. 8	2
	915538-6	Nut — 10-24 Eslok	Ra. 8	2
10-14	100729	Clip, To Fuel Tank Support	Ra. 8, 10, 12, 14	2
	2879	Clip, Choke and Throttle	Ra. 10, 12, 14	2
	7922	Clip	Ra. 8	2
	960150-4	Screw — $\frac{1}{4}$ -20 x $\frac{3}{8}$ Whizlock	Ra. 10, 12, 14	1
	5431	Nut — Special $\frac{1}{4}$ -20	Ra. 10, 12, 14	1
	9080014	Bolt, $\frac{1}{4}$ -20 x $\frac{1}{2}$	Ra. 10, 12, 14	1
	915111-6	Nut, $\frac{1}{4}$ -20 Eslok	Ra. 10, 12, 14	1
10-20	100572	Tank, Fuel	Ra. 8, 10, 12, 14	1
10-21	102321	Cap, Fuel Tank	Ra. 8, 10, 12, 14	1
10-22	100427	Wire, Tank Hold Down	Ra. 8, 10, 12, 14	1
10-25	6949	Spring	Ra. 8, 10, 12, 14	1
10-30	8023	Valve, Fuel	Ra. 8, 10, 12, 14	1
	5189	Spacer	Ra. 8, 10, 12, 14	1

ITEM NO.	PART NO.	DESCRIPTION	MODEL APPLICATION	NO. REQ'D.	
10-31	100327	Filter Assy. — Fuel	Ra. 8, 10, 12, 14	1	
10-32	*9212	Hose—Fuel—Valve to Tank 6.5"	Ra. 8, 10, 12, 14	1	
	*8714	Hose—Fuel—Tank to Filter 8.5"	Ra. 8	1	
	*100088	Hose—Fuel—Tank to Filter 9.5"	Ra. 10, 12, 14	1	
	*102604	Hose—Fuel—Filter to Pump 16"	Ra. 8	1	
	*100061	Hose—Fuel—Filter to Pump 24"	Ra. 10, 12, 14	1	
	*102713	Hose—Fuel—Pump to Carb. 3"	Ra. 8	1	
	*8025	Hose—Fuel—Pump to Carb. 5.5"	Ra. 10, 12, 14	1	
	*Cut from 6554				
10-33	101349	Clamp, Hose, Adjustable	Ra. 8, 10, 12, 14	1	
10-34	950154	Clamp, Corbin $\frac{1}{2}$ "	Ra. 8, 10, 12, 14	5	
10-35	101861	Clamp, Hose	Ra. 8, 10, 12, 14	AR	
	908017-4	Bolt, $\frac{3}{16}$ -18 x $\frac{3}{4}$	Ra. 10, 12, 14	1	
	908019-4	Bolt, $\frac{3}{16}$ -18 x 1	Ra. 8	1	
	920008-4	Washer, $\frac{3}{8}$ SAE	Ra. 10, 12, 14	1	
	915112-6	Nut, $\frac{3}{16}$ -18 Eslok	Ra. 8, 10, 12, 14	1	
*10-40	102258	Muffler Assy. A 105915-3	Ra. 8, 10, 12, 14	1	
	10-44	102645	Clamp — Muffler	Ra. 8, 10, 12, 14	2
	10-45	943364-4	Nipple, Pipe 1" x $\frac{1}{2}$	Ra. 8	1
	10-46	100090	Nipple, Pipe 1" Special	Ra. 8	1
	10-47	943026-4	Elbow Pipe 90° 1"	Ra. 8	1
*10-49	102228	Tube Assy. Inlet	Ra. 8, 10, 12, 14	1	
<b>11.000 ELECTRICAL SYSTEM (PLATE 11.1)</b>					
11-01	101843	Harness — Wiring (Main)	Ra. 8, 10, 12, 14	1	
	100571	Tie — Wire Retainer	Ra. 8, 10, 12, 14	AR	
	101446	Insulator (Plastic Shield)	Ra. 8, 10, 12, 14	1	
11-02	101971	Grommet Rubber (111. Plate 8.1)	Ra. 8, 10, 12, 14	1	
11-03	100335	Wire, Battery to Ground	Ra. 8	1	
	100446	Wire, Battery to Ground	Ra. 10, 12, 14	1	
11-04	101972	Wire, Battery to Solenoid	Ra. 10, 12, 14	1	
	8655	Wire, Battery to Solenoid	Ra. 8	1	
11-05	8655	Wire, Solenoid to Starter	Ra. 8, 10, 12, 14	1	
11-06	102250	Wire Assy. — Interlock Sw. to Solenoid	Ra. 8, 10, 12, 14	1	
11-07	102251	Wire Assy. — Interlock Sw. to Harness	Ra. 8, 10, 12, 14	1	
11-03	101943	Wire Assy. — Coil to Harness	Ra. 8, 10, 12, 14	1	
11-10	101846	Fused Connector	Ra. 12, 14	1	
	101639	Fuse SFE 20 Amp., Box of 5	Ra. 12, 14	1	
11-13	7226	Wire Assy. & Terminal Head Light	Ra. 12, 14	2	
11-14	100778	Wiring Harness Head & Tail Light	Ra. 12, 14	1	
	8519	Clip	Ra. 12, 14	AR	
11-20	101917	Switch — Ignition	Ra. 8, 10, 12, 14	1	
	101884	Nut — Hex Special $\frac{5}{8}$ -32	Ra. 8, 10, 12, 14	1	
	920160-4	Lockwasher $\frac{5}{8}$	Ra. 8, 10, 12, 14	1	
11-21	7262	Key — Ignition Switch	Ra. 8, 10, 12, 14	2	
11-24	102138	Switch — Light	Ra. 12, 14	1	
	8785	Nut Knurled $\frac{1}{32}$ -32	Ra. 12, 14	1	
	8786	Nut Hex $\frac{1}{32}$ -32	Ra. 12, 14	1	
11-25	102046	Ammeter	Ra. 8, 10, 12, 14	1	
	102047	Clamp, Mounting	Ra. 8, 10, 12, 14	1	
	5924	Nut 10-32 E.S.	Ra. 8, 10, 12, 14	2	
11-26	8658	Solenoid	Ra. 8, 10, 12, 14	1	
	960151-4	Bolt, $\frac{1}{4}$ -20 x $\frac{1}{2}$ Whizlock	Ra. 8, 10, 12, 14	2	
11-28	101450	Regulator — Rectifier	Ra. 8, 10, 12, 14	1	
	908003-4	Bolt, $\frac{1}{4}$ -20 x $\frac{3}{4}$	Ra. 8, 10, 12, 14	2	
	915111-6	Nut $\frac{1}{4}$ -20 Eslok	Ra. 8, 10, 12, 14	2	
11-29	102371	Plate — Coil Mounting	Ra. 8	1	
11-30	101845	Switch — Interlock	Ra. 8, 10, 12, 14	1	
	102277	Nut — Switch $\frac{3}{16}$ -18	Ra. 8, 10, 12, 14	1	
11-31	101827	Bracket — Switch Mounting	Ra. 8, 10, 12, 14	1	
	908034-4	Bolt — $\frac{3}{8}$ -16 x 1	Ra. 8, 10, 12, 14	1	
	915113-6	Nut — $\frac{3}{8}$ -16 Eslok	Ra. 8, 10, 12, 14	1	
11-40	100503	Battery	Ra. 8	1	
	908003-4	Bolt, $\frac{1}{4}$ -20 x $\frac{3}{4}$ Bat. Term.	Ra. 8	2	
	920007-4	Nut, $\frac{1}{4}$ -20 Bat. Term.	Ra. 8	2	
	915111-6	Washer, $\frac{1}{4}$	Ra. 8	2	

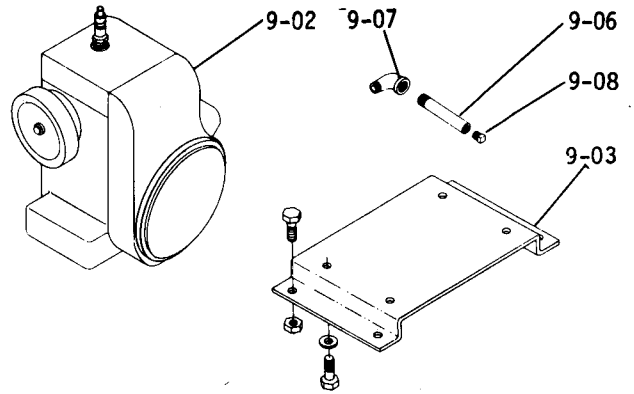
ITEM NO.	PART NO.	DESCRIPTION	MODEL APPLICATION	NO. REQ'D.
11-40	100502	Battery	Ra. 8, 10, 12, 14	6
11-41	100438	Cap — Battery Cell	Ra. 10, 12, 14	1
11-42	9155	Cover — Battery Terminal — Positive	Ra. 10, 12, 14	1
11-45	7781	Battery Box Assy.	Ra. 10, 12, 14	1
	4953	Battery Box Assy.	Ra. 8	1
	915112-6	Nut, $\frac{3}{16}$ -18 Eslok	Ra. 8, 10, 12, 14	2
11-46	7779	Link — Battery Clamp	Ra. 10, 12, 14	1
	4958	Link — Battery Clamp	Ra. 8	1
	915111-6	Nut — $\frac{1}{4}$ -20 Eslok	Ra. 8, 10, 12, 14	2
<b>11.060 LIGHTS AND CIGAR LIGHTER (PLATE 11.2)</b>				
11-60	7223	Reflector Hd. Light & Housing & Socket	Ra. 12, 14	1
11-61	7227	Spring — Hd. Light Socket	Ra. 12, 14	2
11-62	7228	Bulb — Hd. Light #1156	Ra. 12, 14	2
11-63	7075	Lens — Hd. Light	Ra. 12, 14	1
	7229	Screw 6-32 x $\frac{3}{8}$ S.T. Special	Ra. 12, 14	4
11-65	7618	Connector, 3 Wire	Ra. 12, 14	1
	3023	Clip	Ra. 12, 14	4
11-67	8041	Base — Tail Light W. Bulb	Ra. 12, 14	1
11-68	8042	Cover	Ra. 12, 14	1
11-69	8043	Bulb, Tail Light	Ra. 12, 14	1
11-70	8044	Pad, Tail Light Mounting	Ra. 12, 14	1
11-71	6922	Connector — 2 Wire	Ra. 12, 14	1
	3032	Clip	Ra. 12, 14	3
	910808-4	Bolt, Pan Hd. 10-32 x $\frac{3}{8}$	Ra. 12, 14	2
	915551-4	Nut, Hex 10-32	Ra. 12, 14	2
	920079-4	Lockwasher #10	Ra. 12, 14	2
<b>13.000 WHEELS AND TIRES (PLATE 13.1)</b>				
13-01	9791	Wheel & Tire Assy. — Front	Ra. 8, 10, 12, 14	2
13-02	5432	Wheel & Tire Assy. — Rear	Ra. 12, 14	2
	100969	Wheel & Tire Assy. — Rear	Ra. 8, 10	2
13-03	9652	Wheel & Bearing Assy.—Front	Ra. 8, 10, 12, 14	2
13-04	5433	Wheel — 12 x 7 JA	Ra. 8, 10, 12, 14	2
	5435	Valve — Tubeless Tire	Ra. 8, 10, 12, 14	4
13-05	9792	Tire 16 x 6.50-8 Front	Ra. 8, 10, 12, 14	2
13-06	5434	Tire 9 x 12 Rear	Ra. 12, 14	2
	100772	Tire 7.50-12	Ra. 8, 10	2
13-07	5512	Tube 16 x 6.50-8 (Service Only)	Ra. 8, 10, 12, 14	2
13-08	7007	Tube 23 x 8.50-12 (Service Only)	Ra. 8, 10, 12, 14	2
* 13-11	4999	Bearing — Ball Front Wheel	Ra. 8, 10, 12, 14	2
	908033-6	Bolt, $\frac{3}{8}$ -16 x $\frac{7}{8}$	Ra. 8, 10, 12, 14	2
	2844	Washer	Ra. 8, 10, 12, 14	2
	1278	Washer, (.050")	Ra. 8, 10, 12, 14	2
	5210	Washer, (.015")	Ra. 8, 10, 12, 14	2
* 13-15	6465	Hub, Wheel (5 Bolt)	Ra. 12, 14	2
	4996	Hub, Wheel (5 Bolt)	Ra. 8, 10	2
	909554	Set Screw $\frac{3}{8}$ -16 x - Sq. Hd.	Ra. 8, 10, 12, 14	2
	915236-4	Nut — Hex $\frac{3}{8}$ -16 Jam	Ra. 8, 10, 12, 14	2
	937022	Key — Woodruff #15	Ra. 8, 10, 12, 14	2
* 13-16	1004	Lug Bolt	Ra. 8, 10, 12, 14	10
13-21	7747	Hub Cap	Ra. 8, 10, 12, 14	2
<b>14.000 DRIVE BELTS, PULLEYS (PLATE 14.1)</b>				
14-01	7473	V-Belt — Drive	Ra. 8, 10, 12, 14	1
14-03	101875	Pulley — Engine	Ra. 8	1
	7466	Pulley — Engine	Ra. 10, 12, 14	1
	6507	Key — $\frac{1}{4}$ x $\frac{1}{4}$ x $\frac{1}{2}$	Ra. 8, 10, 12, 14	1
	909862-5	Set Screw $\frac{3}{16}$ -18 x $\frac{3}{16}$	Ra. 8, 10, 12, 14	2
14-10	7492	Pulley, Trans. Main Drive	Ra. 8, 10, 12, 14	1
	937010	Key	Ra. 8, 10, 12, 14	1
	909862-5	Set Screw	Ra. 8, 10, 12, 14	1

ITEM NO.	PART NO.	DESCRIPTION	MODEL APPLICATION	NO. REQ'D.
<b>14.050 MANUAL P.T.O. (PLATE 14.3)</b>				
14-50	4355	Rod, Clutch Control	Ra. 8, 10, 12, 14	1
14-51	2709	Knob, Clutch Rod	Ra. 8, 10, 12, 14	1
14-52	4383	Bracket	Ra. 8, 10, 12, 14	1
	926694-4	Screw $\frac{5}{16}$ -18 x $\frac{5}{8}$ S.T.	Ra. 8, 10, 12, 14	2
* 14-53	6655	Clutch Plate & Facing Assy.	Ra. 8, 10, 12, 14	1
	6656	Plate — Clutch	Ra. 8, 10, 12, 14	1
	4365	Facing	Ra. 8, 10, 12, 14	1
	6657	Rivet	Ra. 8, 10, 12, 14	6
14-54	6658	Race, Bearing	Ra. 10, 12, 14	1
	6935	Race, Bearing	Ra. 8	1
* 14-55	6659	Retainer, Bearing Race	Ra. 8, 10, 12, 14	2
	960151-4	Bolt, $\frac{1}{4}$ -20 x $\frac{1}{2}$ Whizlock	Ra. 8, 10, 12, 14	4
* 14-56	6663	Seal	Ra. 8, 10, 12, 14	1
* 14-57	6662	Bearing	Ra. 8, 10, 12, 14	1
* 14-58	9209	Housing — Clutch & Pulley	Ra. 8, 10, 12, 14	1
* 14-59	5196	Bearing, Ball	Ra. 8, 10, 12, 14	1
	14-60	Snap Ring $1\frac{3}{4}$ Bore	Ra. 8, 10, 12, 14	1
	14-61	Hairpin Cotter	Ra. 8, 10, 12, 14	1
	14-62	Snap Ring $\frac{3}{4}$ Shaft	Ra. 8, 10, 12, 14	1
	14-63	Shaft, Clutch	Ra. 8, 10, 12, 14	1
	14-64	Rod & Plate Assy.	Ra. 8	1
	7661	Rod & Plate Assy.	Ra. 10, 12, 14	1
	14-65	Bolt, $\frac{3}{8}$ -16 x 1	Ra. 8	1
	908046-4	Bolt, $\frac{7}{16}$ -14 x 1	Ra. 10, 12, 14	1
14-66	920083-4	Lockwasher $\frac{3}{8}$	Ra. 8	1
	920084-4	Lockwasher $\frac{7}{16}$	Ra. 10, 12, 14	1
14-67	920880-5	Set Screw $\frac{3}{8}$ -16 x $\frac{3}{4}$	Ra. 8, 10, 12, 14	1
14-68	915113-6	Nut, $\frac{3}{8}$ -16 Eslok	Ra. 8, 10, 12, 14	2
14-69	5194	Decal — Clutch Adjustment	Ra. 8, 10, 12, 14	1
<b>15.000 SEATS, DECALS, MISC. TRIM (PLATE 15.1)</b>				
15-01	100780	Cushion — Seat One Piece	Ra. 8, 10	1
	6189	Tape — Foam	Ra. 8, 10	2
	908015-4	Bolt, $\frac{5}{16}$ -18 x $\frac{1}{2}$	Ra. 8, 10	2
	908016-4	Bolt, $\frac{5}{16}$ -18 x $\frac{5}{8}$	Ra. 8, 10	2
	920082-4	Lockwasher — $\frac{5}{16}$	Ra. 8, 10	4
	915932-4	Nut, High Crown 10-24	Ra. 8, 10	2
15-02	9661	Seat Base Assy.	Ra. 12, 14	1
15-03	9662	Spacer	Ra. 12, 14	2
	900038-4	Bolt, $\frac{5}{16}$ -18 x 1 Carriage	Ra. 12, 14	4
	915112-6	Nut, $\frac{5}{16}$ -18 Eslok	Ra. 12, 14	4
	6189	Tape Foam	Ra. 12, 14	1
15-04	9663	Cushion — Seat	Ra. 12, 14	1
	960151-4	Bolt, $\frac{1}{4}$ -20 x $\frac{1}{2}$ Whizlock	Ra. 12, 14	3
15-05	9664	Cushion — Back	Ra. 12, 14	1
15-06	9665	Knob — Back Adjusting	Ra. 12, 14	1
	920082-4	Lockwasher	Ra. 12, 14	4
	915932-4	Nut, High Crown 10-24	Ra. 12, 14	2
	908016-4	Bolt, $\frac{5}{16}$ -18 x $\frac{5}{8}$	Ra. 12, 14	2
15-20	101036	Decal — Hood Trim (Wheel Horse)	Ra. 8, 10, 12, 14	2
	100000	Decal — Hood Trim	Ra. 8	2
15-23	102362	Decal — Raider 8 — 6 Speed	Ra. 8	2
	100190	Decal — Raider 10 — 6 Speed	Ra. 10	2
	9994	Decal — Raider 12 — 6 Speed	Ra. 12	2
	101897	Decal — Raider 14 — 6 Speed	Ra. 14	2
15-24	100958	Decal — Racing Stripes	Ra. 10, 12, 14	1
15-25	8138	Decal — Fender	Ra. 8, 10, 12, 14	1
15-26	100614	Reflector — Fender	Ra. 8, 10	1
15-32	7472	Decal — Seat Latch	Ra. 8, 10, 12, 14	1
15-33	7183	Decal — Shift Pattern	Ra. 8, 10, 12, 14	1
15-34	101226	Decal — Caution (Lower Hood Stand)	Ra. 8, 10, 12, 14	1

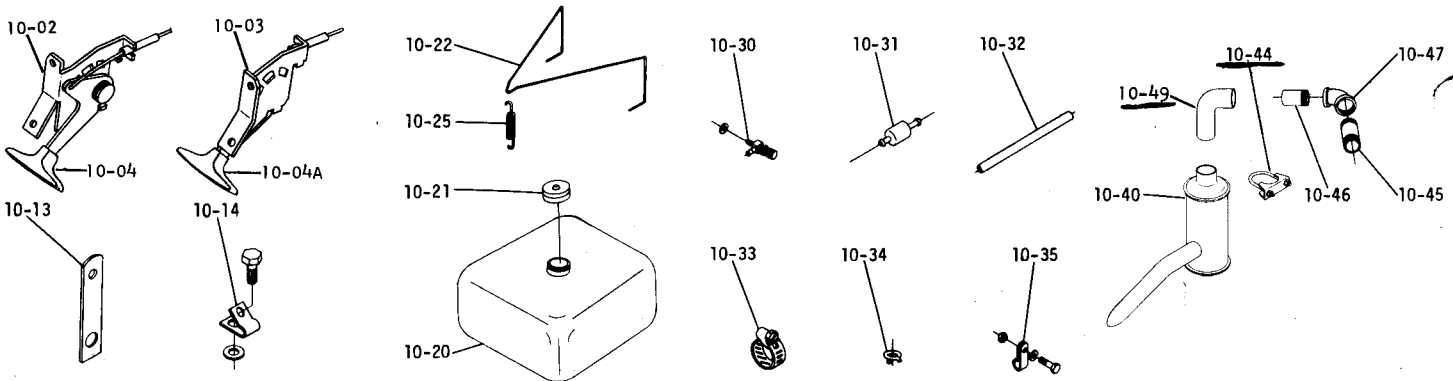
**Plate 7.2 LIFT LINKAGE**



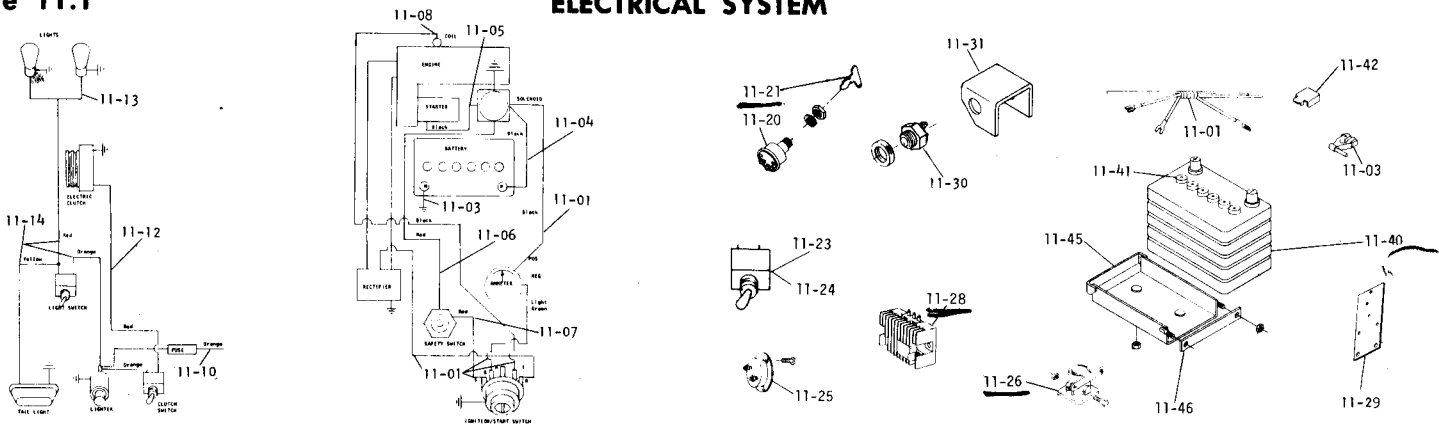
**Plate 9.1 ENGINE**



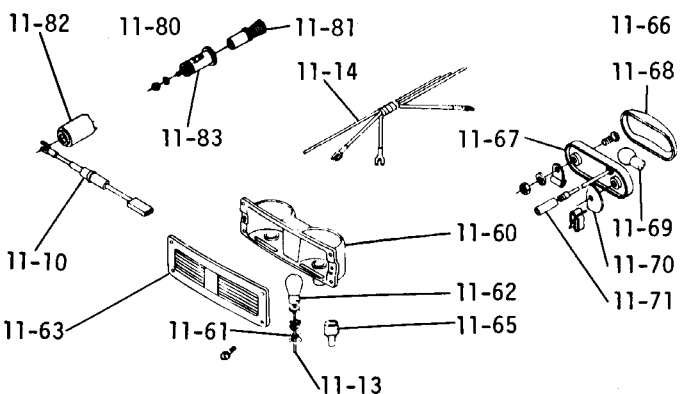
**Plate 10.1 FUEL AND EXHAUST SYSTEMS**



**Plate 11.1 ELECTRICAL SYSTEM**



**Plate 11.2 LIGHTS & CIGAR LIGHTER**



**Plate 13.1 WHEELS AND TIRES**

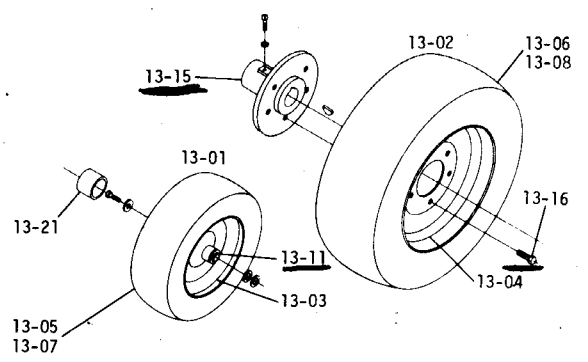




Plate 14.1 DRIVE BELTS, PULLEYS

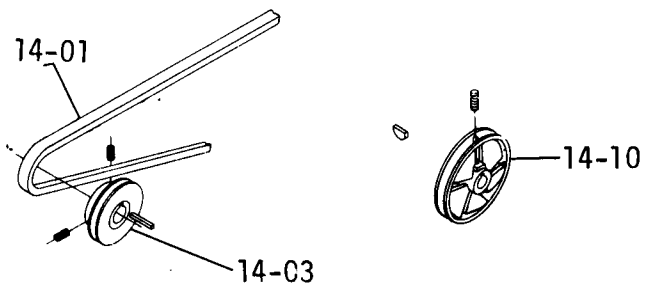


Plate 14.3 P. T. O. CLUTCH

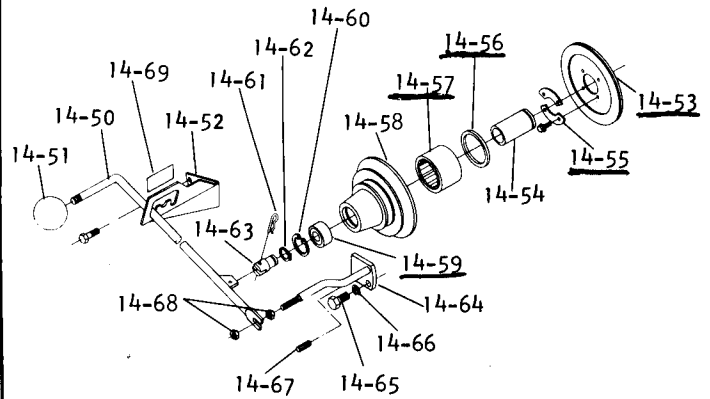
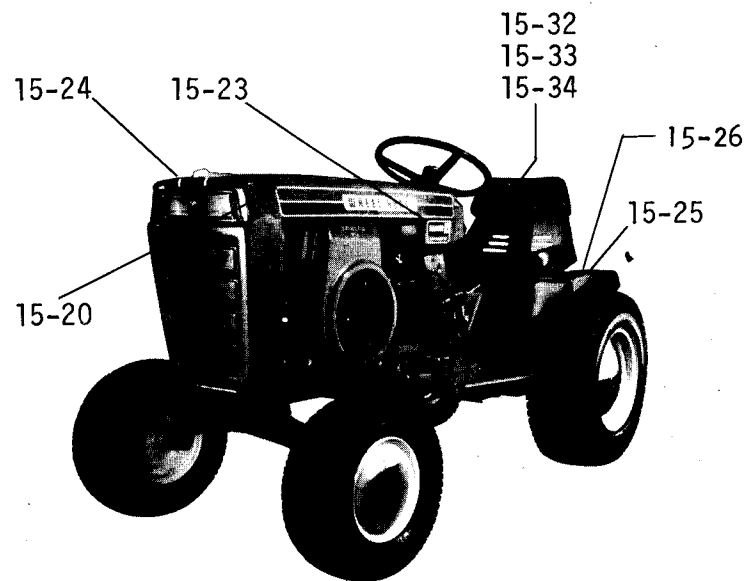
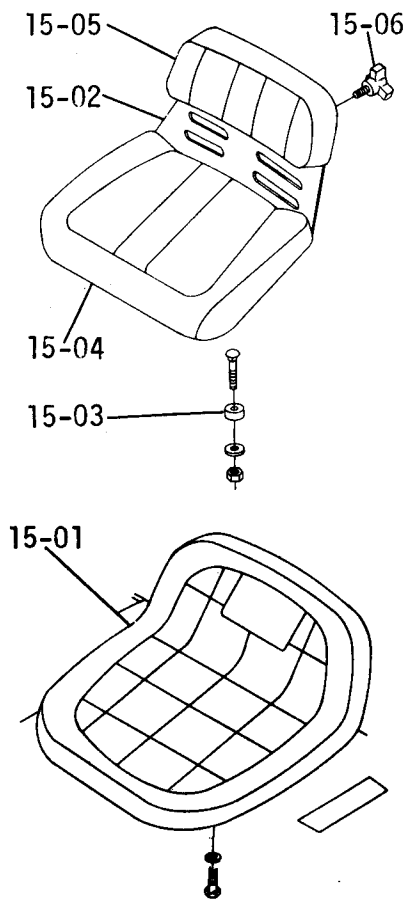


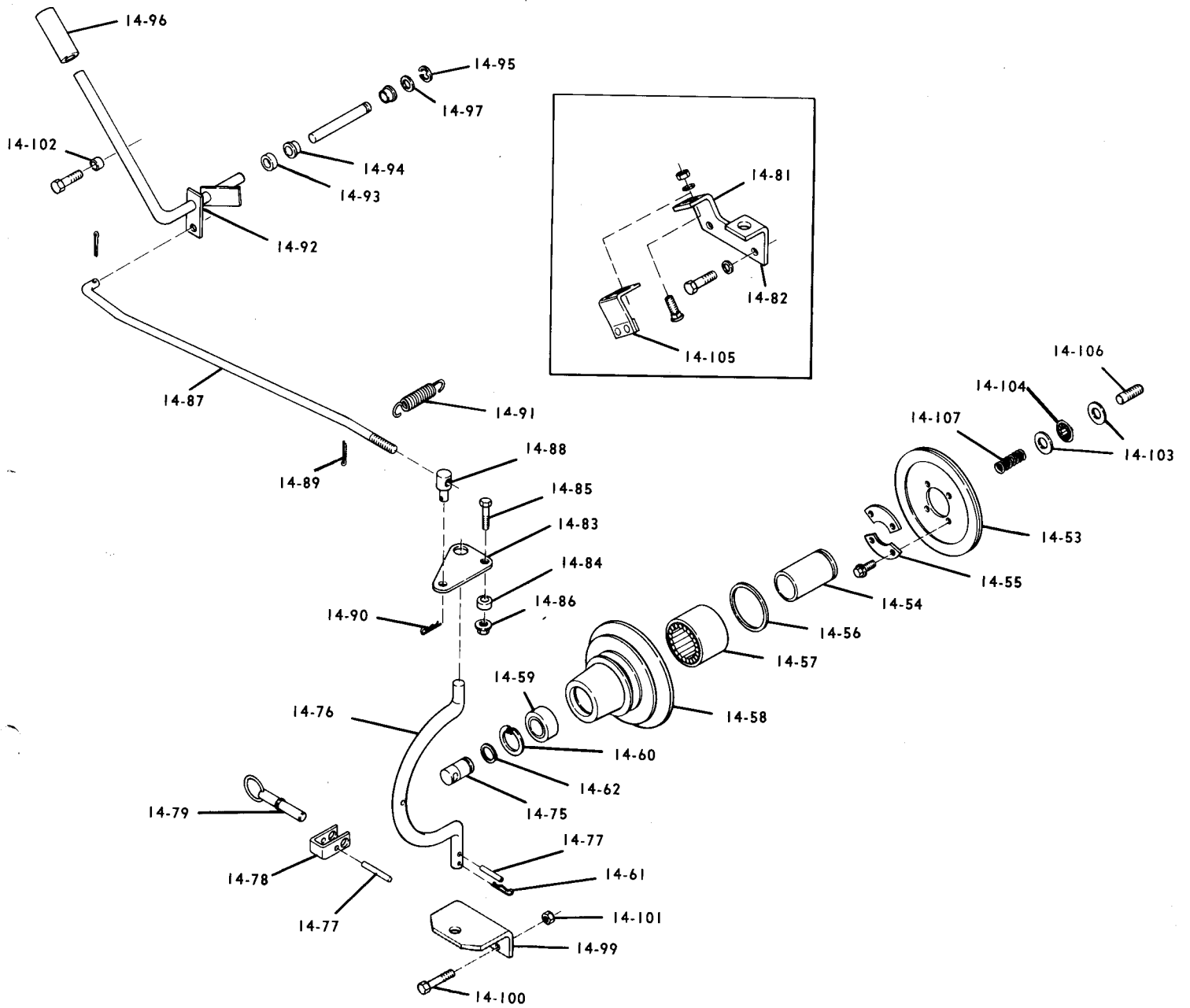
Plate 15.1 SEATS, DECALS, MISC. TRIM



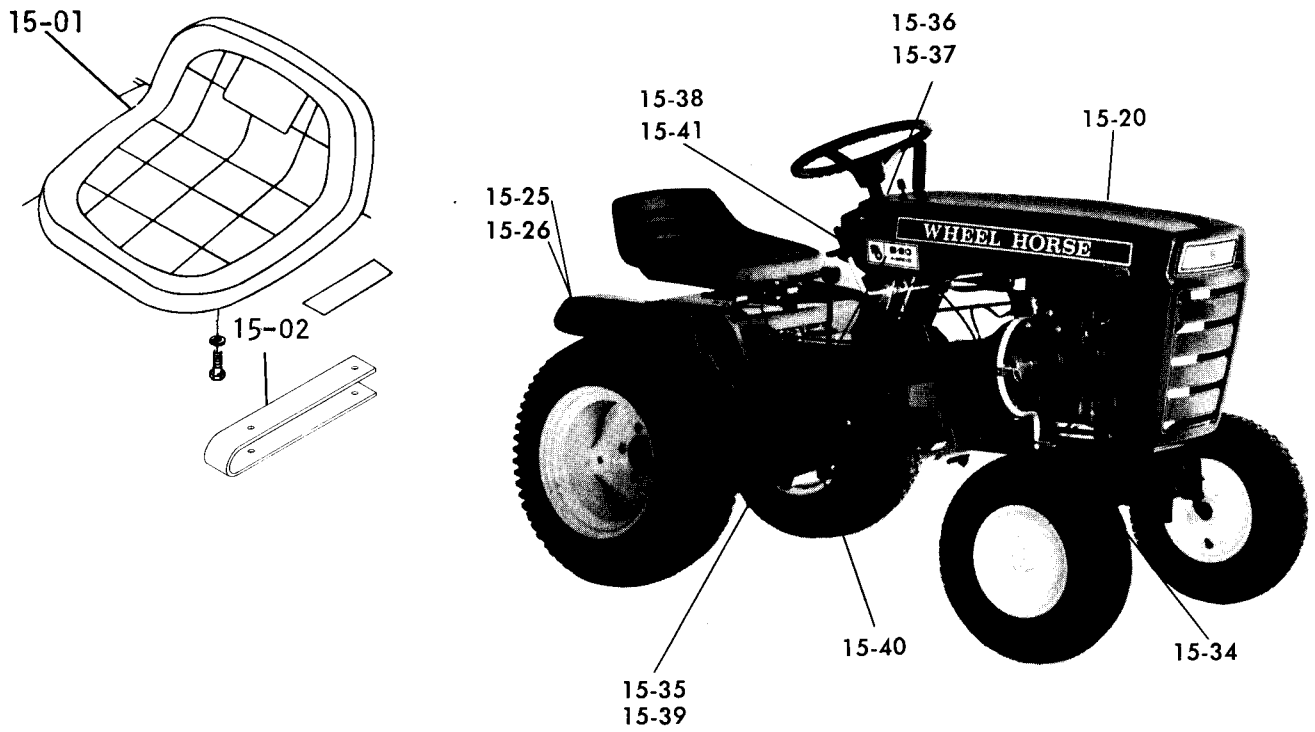
**B-80 PARTS MANUAL**  
**14.050 MANUAL P.T.O. (FIG. 14B)**

ITEM NO.	PART NO.	DESCRIPTION	NO. REQ'D.
14-53	103817	Clutch Plate & Facing Assembly	1
	103477	Clutch Plate	1
	103140	Facing	1
	6657	Rivet	6
14-54	6935	Bearing Race	1
14-55	6659	Bearing Race Retainer	2
	960152	Bolt, Whizlock 1/4-20 x 1/2	4
14-56	6663	Seal	1
14-57	6662	Bearing	1
14-58	103478	Clutch and Pulley Housing	1
14-59	5196	Ball Bearing	1
14-60	936032	Snap Ring 1 3/4" Bore	1
	933506	Hairpin Cotter	1
14-62	936125	Snap Ring, 3/4" Shaft	2
14-75	102872	Clutch Shaft	1
14-76	102938	Housing Rod	1
14-77	933267	Spirol Pin, 5/32 x 1 1/4	2
14-78	102941	Clevis	1
14-79	102956	Pin	1
14-81	104732	Engine Bracket	1
14-82	920083	Lockwasher — 3/8	1
14-83	102943	Plate	1
	908034	Bolt, Hex 3/8-16 x 1	1
14-84	102704	Spacer	1
14-85	908034	Bolt, Hex 3/8-16 x 1	1
14-86	102809	Flange Nut	1
14-87	102937	Clutch Rod	1
14-88	101161	Trunnion	1
14-89	932016	Cotter Pin, 1/8 x 3/4	2
14-90	933505	Hairpin	1
14-91	1230	Spring	1
14-92	103881	Clutch Lever Assembly	1
14-93	102964	Spacer	1
14-94	7879	Bushing	2
14-95	5701	E-Ring, 1/2" Shaft	1
14-96	9038	Grip	1
14-97	920011	Washer — 1/2	1
	3765	Washer — Shim	1
14-99	102870	Support	1
14-100	908035	Bolt, Hex 3/8-16 x 1 1/4	2
14-101	915113	Nut, 3/8-16	2
14-102	9690	Spacer	1
14-103	7947	Thrust Washer	2
14-104	9862	Thrust Bearing	1
14-105	104730	Brake Assembly	1
	900016	Bolt, Carriage 1/4-20 x 1	2
	915112	Nut, 1/4-20 Eslok	2
	920007	Washer — 1/4 SAE	2
14-106	104842	Stud — .7/16 Diameter	1
14-107	101853	Spring	1

Figure 14B. PTO CLUTCH



**Figure 15. SEATS, DECALS, MISC. TRIM**



**B-80 PARTS MANUAL  
15.000 SEATS, DECALS, MISC. TRIM (FIG. 15)**

ITEM NO.	PART NO.	DESCRIPTION	NO. REQ'D.
15-01	104851	One Piece Seat	1
	908017	Bolt, 5/16-18 x 3/4	4
	920082	Lockwasher — 5/16	4
15-02	103145	Seat Spring	2
15-20	103831	Decal — Hood Trim	2
15-25	103174	Decal — Rear Fender	1
15-26	104737	Fender Reflector	2
15-34	104937	Decal — Tach-a-matic	1
15-35	103884	Decal — B-80 4-Speed	2
15-36	103567	Decal — Caution	1
15-37	103568	Decal — Read Operator Manual	1
15-38	102948	Decal — Hand Lift	1
15-39	102847	Decal — 4-Speed Shift Knob	1
15-40	104951	Decal — Park Brake	1
15-41	102859	Decal — PTO	1

# PARTS LIST AND INSTRUCTIONS

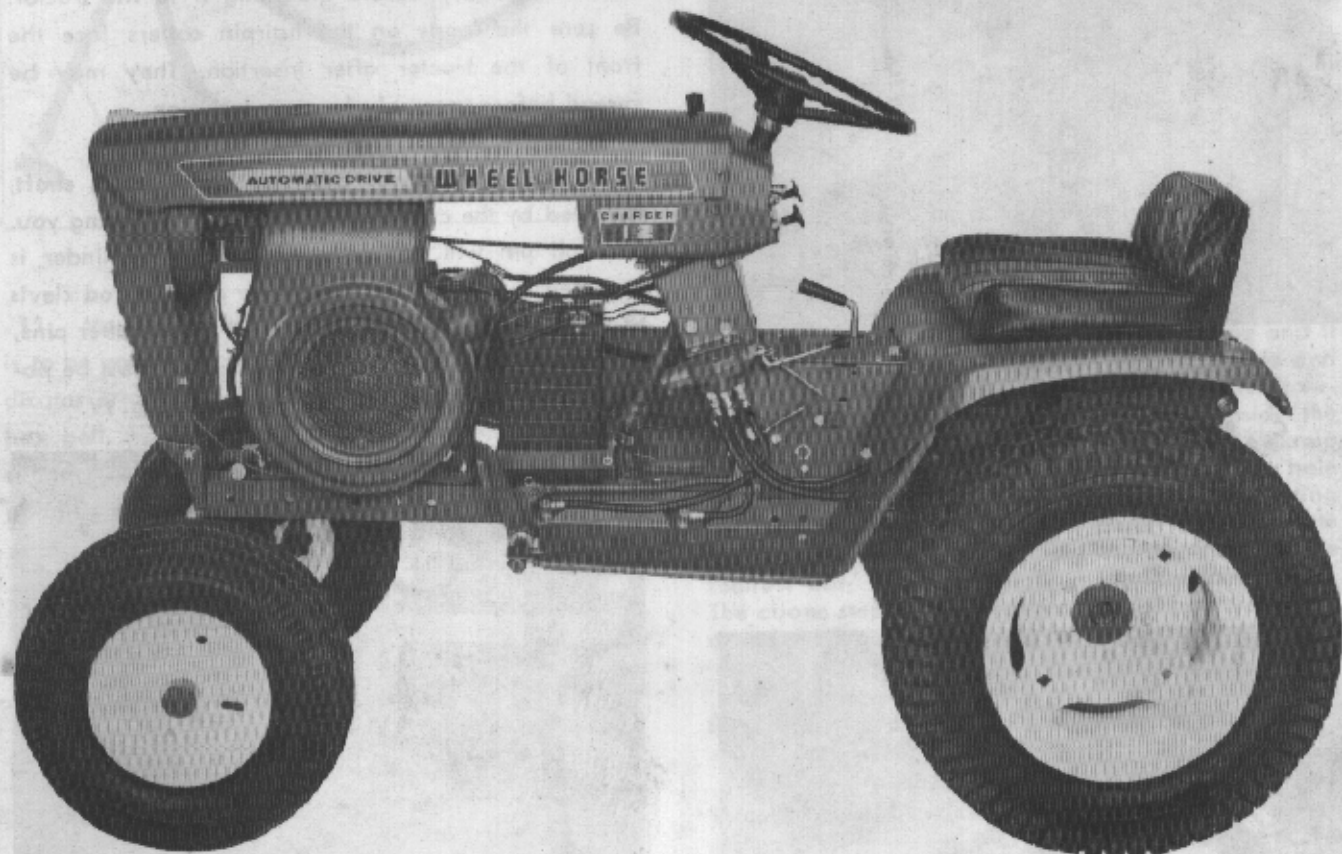


*Wheel Horse*

WHEELHORSE PRODUCTS, INC. - SOUTH BEND, IND.

## HYDRAULIC UNIT

MODEL  
**8-4111**



### DESCRIPTION

The hydraulic lift is designed to give you hydraulic power for raising and lowering your attachments with finger tip control. This unit operates off the Wheel-A-Matic drive, hydraulic system.

**Important** — Models 875 and 1075 require Kit No. 6061.

### ASSEMBLY INSTRUCTIONS

1. Remove all parts from the carton and place parts on a clean surface. To identify the parts, mentioned in the instructions, See Fig. 1.

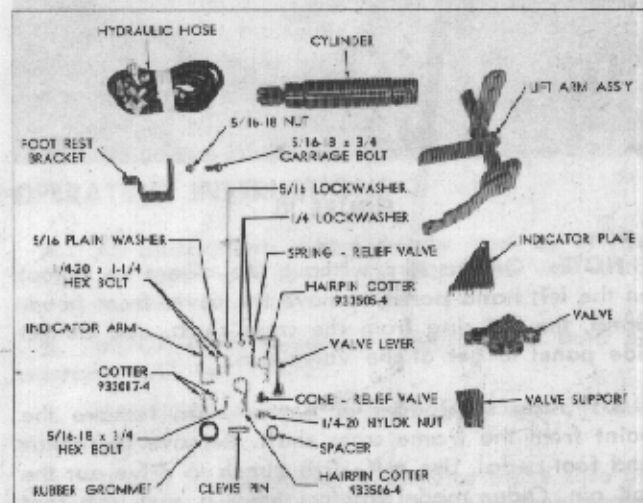
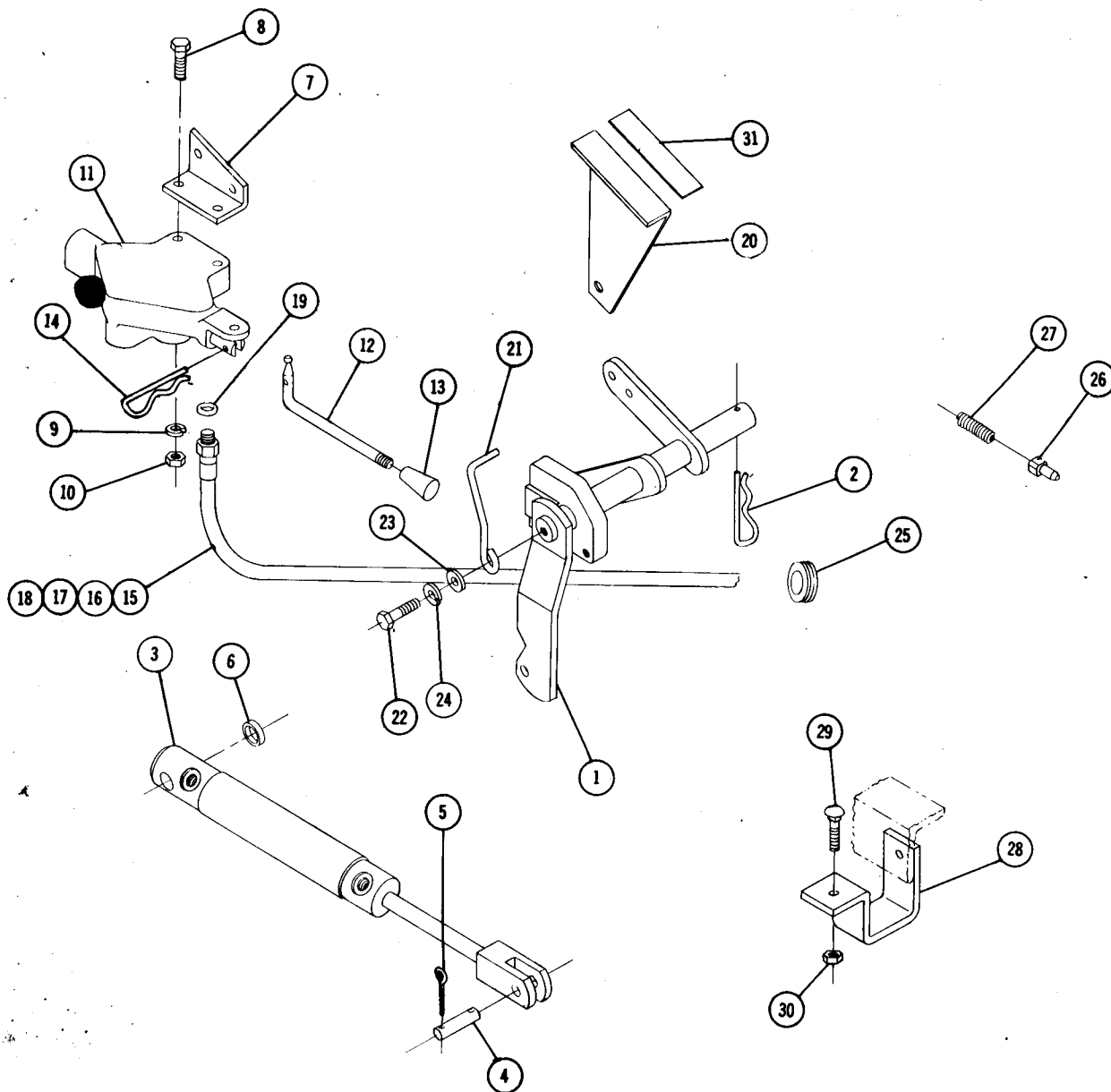


FIGURE 1

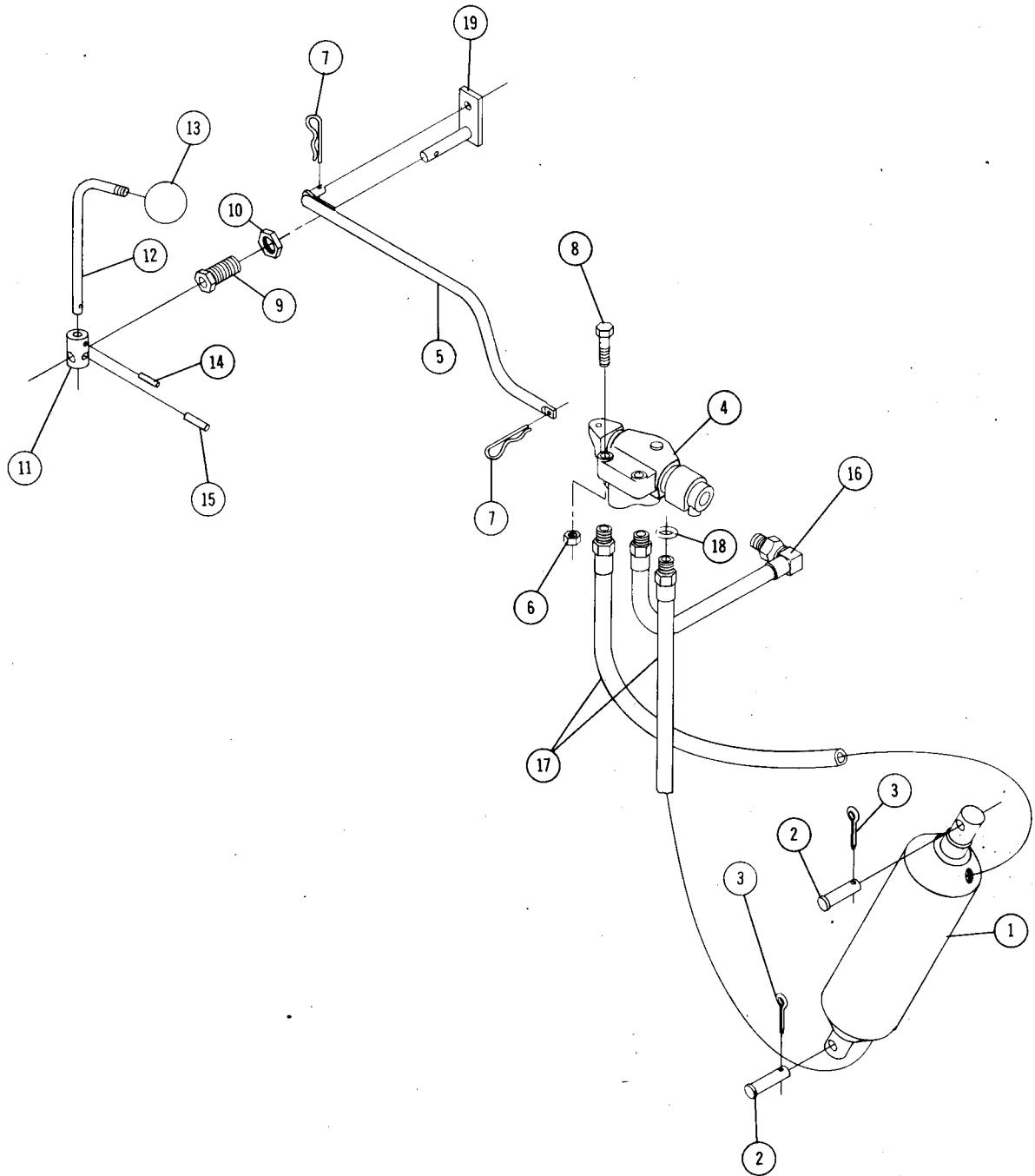


### PARTS LIST

All Specifications Subject to Change Without Notice.

When ordering parts always list Part No. and name of part.

Item No.	Part No.	Description	No. Req'd.	Item No.	Part No.	Description	No. Req'd.
1	6615	Ass'y. Lift Arm	1	17	6626	Ass'y. Hose — 14½"	1
2	933506-4	Hairpin Cotter	1	18	6627	Ass'y. Hose — 11½"	1
3	6618	Ass'y. Cylinder	1	19	970126	"O" Ring	8
4	6619	Pin	1	20	6628	Plate — Indicator	1
5	932017-4	Cotter Pin	2	21	6629	Arm	1
6	4064	Spacer	1	22	908017-4	Bolt Hex ⅝-18 x ¾	1
7	6620	Support Valve	1	23	920008-4	Washer ⅝ SAE	1
8	908006-4	Bolt Hex ¼-20 x 1¼	2	24	920082-4	Lockwasher ⅝ Dia.	1
9	920081-4	Lockwasher ¼ Dia.	2	25	5439	Grommet — Rubber	1
10	915111-6	Nut Nyllok ¼-20	2	26	6632	Cone — Relief Valve	1
11	6621	Ass'y. Valve	1	27	6631	Spring — Relief Valve	1
12	6622	Lever — Valve	1	28	8007	Bracket	1
13	6623	Knob	1	29	900214-4	Bolt ⅝-18 x ¾ Carriage	1
14	933505-4	Hairpin Cotter	1	30	9J5662-4	Nut Hex ⅝-18	1
15	6624	Ass'y. Hose — 29"	1	31	6630	Decal — Height Indicator	1
16	6625	Ass'y. Hose — 20"	1				



## PARTS LIST HYDRAULIC LIFT ACCESSORY MODEL 8-4121

Parts available only through Authorized Dealers.  
 When ordering parts always list Part No. and name of Part.  
 (Specifications subject to change without notice.)

Item No.	Part No.	Description	No. Req'd.	Item No.	Part No.	Description	No. Req'd.
1	8365	Cylinder — Hydraulic	1	11	9909	Sleeve — Lever	1
2	8715	Pin — Clevis	2	12	9856	Lever — Hydraulic Valve	1
3	932017-4	Cotter Pin $\frac{1}{8}$ x 1	2	13	8706	Knob — Valve Lever	1
4	8363	Valve — Hydraulic	1	14	933152	Roll Pin $\frac{1}{8}$ x $\frac{3}{4}$	1
5	9851	Link — Rod	1	15	933184	Roll Pin $\frac{3}{8}$ x $\frac{3}{4}$	1
6	915661-4	Nut — Elastic Stop $\frac{1}{4}$ -20	2	16	9857	Hose — Hydraulic $5\frac{1}{4}$ "	1
7	933505-4	Hairpin Cotter	2	17	9859	Hose — Hydraulic 21"	2
8	908006-4	Bolt Hex $\frac{1}{4}$ -20 x $1\frac{1}{4}$	2	18	973310	"O" Ring	6
9	9855	Sleeve — Spacer	1	19	9852	Control Rod	1
10	915241-4	Nut Hex Jam $\frac{3}{4}$ -10	1				